

Year 2 Curriculum Newsletter - Summer Term 2025- Woolden Hill

Rainforests!



Dear Parents and Carers,

The teaching team in Year 2 this term are Mrs Johnson, Mrs Finney Mrs Carter and we are lucky enough to have Mr White our trainee teacher completing his final placement with us in Year 2.

This term's topic is focused on learning about the Geography and Science of rainforests. Our topic is named 'Rainforests!' As part of this topic the children will have the chance to explore where some different rainforests are, looking at maps, globes and photographs. Science will be the initial focus as we consider the living things that can be found in the rainforests, living processes, life cycles and food chains.

As the weather changes between cool and warm this term please ensure that your child still comes to school with their coats and jumpers to keep them warm when necessary. Please label all items of clothing with your child's name, so if left on the playground they can easily find their way back to their owner!

Please also remember that the children need a water bottle at school every day. As the weather warms up the children tend to drink more, so we can refill the bottles during the day. Fruit is offered to KS1 children but the children are welcome to bring in their own fruit or vegetable snack. It is important that children keep hydrated throughout the day and having a breaktime snack can help them stay energized through the morning.

Although SATS are no longer statutory for Year 2 and results will not be sent to the Local Authority, Our Trust will still undertake equivalent SATS style papers to help us assess children at the end of Year 2, these will take place across May. Children will be aware of these 'secret missions' and with previous practice will treat these exactly the same as our in school assessment weeks.

General Information



Here is some general information about Year 2.

- Homework will be given **every Friday** and should be returned to school by the **following Thursday**. Weekly spelling tests of the spellings provided as homework will be completed on a Friday. Please bring evidence of homework into school or post on Teams.
- Book bags should be brought into school **every day**. Please record any reading your child does at home in their diaries. Children will take an AR quiz in order to change

these books. This is completed in school, children have been provided with their reading age range.

- It is important to hear your child read on a regular basis, to develop fluency and comprehension skills. Reading a book several times really helps with the fluency. If there are particular words they get stuck on, write them down and use them to play snap or memory games etc.
- The classroom doors will be open at **8:35 am** in the morning and the children will be greeted by a member of staff and walk straight into class. **The register is taken at 8:50am.** Similarly, at **3:10pm** the children will leave school via the classroom door. Please alert the school staff if a different adult will be collecting your child at the end of the day.
- Children will need to bring a **named water bottle** into school. No juice or fizzy drinks. **PE days**, will be on a **Monday** and a **Friday. This may change so please keep an eye on the timetable on teams for updates.** Your child will need **two** PE kits, these will need to include, **Outdoor:** Please ensure that your child has appropriate clothing, as he/she will go out in all weathers, **tracksuit bottoms, jumper, t-shirt and trainers. Indoor: t-shirt, shorts and pumps.** Please ensure that all items of uniform and PE kit are **named. Please note:** Children with long hair must have their hair tied back at all times during the school day and all earrings must be removed before the children come to school, on a PE day. Thank you.
- The children will have a personal locker to keep all their belongings in and a drawer in class.
- Children will be provided with a pencil case and stationery, they do not need to bring their own equipment into school.

Our weekly timetable

Year 2- Summer 1- Miss Payne

| | 8.40 | 8.45-9.00 | 9.00-9.30 | 9.40-10.30 | 10.35-10.50 | 10.50-11.05 | 11.05-11.45 | 11.45-12.00 | 12.00-13.10 | 13.10-13.50 | 13.50-14.50 | 14.50-15.10 | 15.10 | |
|-----------|-------------|-----------|-----------|------------|-------------|-------------|-------------|-------------|-------------|-------------|-------------|-------------|-------|------|
| Monday | Morning Job | Register | Phonics | English | Assembly | Play | Maths | Story | Lunch | Art | Art | PE | Story | Home |
| Tuesday | Morning Job | Register | Phonics | English | Assembly | Play | Maths | Story | Lunch | Spelling | Handwriting | Topic | Story | Home |
| Wednesday | Morning Job | Register | Phonics | English | Assembly | Play | Maths | Story | Lunch | Spelling | Handwriting | Topic | Story | Home |
| Thursday | Morning Job | Register | Reading | English | Assembly | Play | Maths | Story | Lunch | Spelling | Handwriting | Topic | Story | Home |
| Friday | Morning Job | Register | Phonics | English | Assembly | Play | Maths | Story | Lunch | Spelling | Handwriting | PE | Story | Home |

English



Reading, Writing and Spelling

This term we will be planning, reading and writing **Non chronological Reports, Poems and Narratives**

In our non chronological report writing we will consider the features that are used and aim to write informative ideas within paragraphs about habitats.

Our poem will be an Acrostic poem where we will use the word Rainforest as our theme. Each letter of the word will begin a new line of the text. We will develop our creative ideas and use adjectives and adverbs.

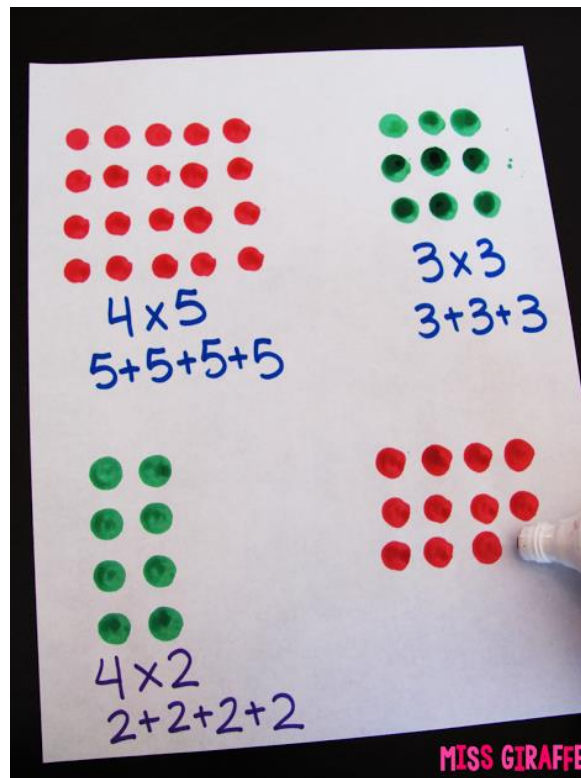
We will continue to use nouns, adjectives, verbs and adverbs to enhance our writing and we will learn to use conjunctions, such as but, if, when, because....

We will use these word types in varied sentence styles, such as statements, questions and exclamations.

We will continue to develop reading and spelling of words using the phonemes learned in previous years. We recommend that regular practice of reading phonemes from Set 3 sound lists is still very valuable. Sounding out words and blending the sounds is a vital skill for future reading development. We will continue to introduce year 2 common exception words for reading and spelling. New rules for spelling, for example, adding suffixes to root words, will be introduced across the term and these will be shared through our weekly homework.

There will also be a selection of fiction and non-fiction books in the classroom to support the children's learning and interest in our topic.





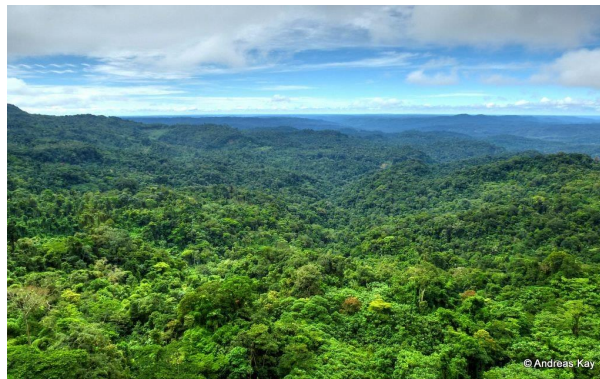
2 - As mathematicians, the children will be using a very practical approach and develop the multi-sensory apparatus of Numicon, cubes, bead strings, toy clocks, rulers, scales, measuring jugs etc.

This term we will be developing the children's understanding of telling the time, from an analogue clock face. We will focus on o'clock, half past, quarter past and quarter to, but will further look into five minute intervals with children as they progress. It is very helpful for you to continuously practice time telling at home. We will also learn how to discuss and describe position and direction.

The children will have lots of time to consolidate areas in Maths in Summer 2. This is a great opportunity for us to recap tricky learning and ensure children have secure knowledge of Year 2 learning. If you identify a specific area your child is struggling with please let a member of Year 2 teaching staff know. Our aim is to consolidate Addition and Subtraction using the formal written method, multiplication and division, fractions, money and time.

We will introduce rapid recall of times tables and division facts for the 2, 5, 3 and 10 x tables.

Connected Curriculum



3 - Geography

We will learn the positions of some of the world's rainforests and share the idea that rainforests are colder the further they are from the equator. Rainforests near the equator are generally hot and humid. We will find out what the physical features of rainforests are and how humans are having an impact on them. We will share conversations about the responsibilities we all have for the future of the natural world. Children will create their own 3D design to showcase their learning.



4 - Science

We will learn all about the living creatures in the rainforest habitats, including plants. We will learn about animals groups including mammals, invertebrates, insects, fish, birds, reptiles and amphibians. We will find out about life cycles of different creatures and the food chains that exist. We will use vocabulary such as prey, predator, carnivore, herbivore and omnivore. We will consider what the difference is between things that are living, have never lived or have once lived (died). We will carry out investigations to find out the best condition required by plants for healthy growth.



5 - Design Technology

We will learn about the habitats preferred by Rainforest animals and develop our own ideas to build something from junk modelling resources. We would welcome useful resources sent in from home. We will draw and label our designs, make them, including a moving flap with a hinge, and finally evaluate how well they worked.



6 - Art

We will be creating our own art work using various media across the term.

We will begin with a focus on a famous piece of art called 'Tiger in a Tropical Storm' (1891) by Henri Rousseau.



7 - ICT

In ICT the children will learn about safe use of technology and online content in our everyday lives. Children also delve into computer programming this term, using scratch.



8 - R.E.

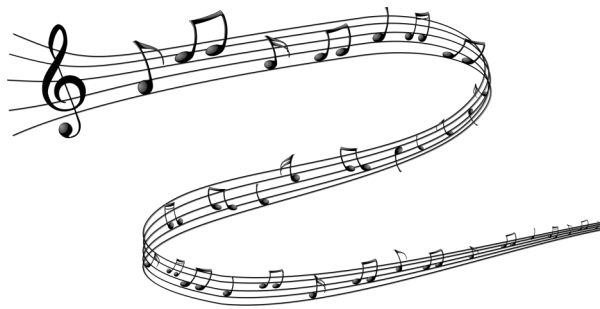
Our Religious Education unit for the term is called The Gospels. Children will learn about the 'good news' Jesus brings across a range of bible stories. They will understand the good news brought through friendship, peace and forgiveness.



9 - PE

This term the pupils will be completing a variety of different activities

PE lessons will be developing fitness, striking and fielding skills and outdoor athletic activities, including running, jumping, hopping, skipping and throwing.



10 - Music

Structure, Technology and Form

This term children will be learning all about musical structure, they will recognise the difference between verses and choruses and create their own music using technology.

How can you help your child at home?

Look at maps together - where are different rainforests? Would you like to visit a rainforest?

Have you ever been to a zoo? Which animals have you seen there who would have originated from rainforests? What conditions do they need? What do they eat?

Visit the library.

Share books together - look at the structure and features of non-fiction texts. What can you find out about wild animals?

Talk about the characters and settings in narratives. How does a story begin, develop in the middle, and end?

Create art work that reflects our topic themes - don't forget to bring it into school to show us!

Visit garden centres and look at the plants they sell. Do they also sell bug hotels/ habitats, hedgehog homes, bird houses, etc?



11 - Useful websites

<https://trockstars.com/> - Support your child with their timestables

<https://play.numbots.com/#/intro> - number bond practice to 20

<https://www.phonicsplay.co.uk/> - phonics games

<http://www.bbc.co.uk/weather/> - let's look at the weather

<https://home.oxfordowl.co.uk/>¹ - support your child with reading and E-books

¹<https://home.oxfordowl.co.uk/>